

KE



55 Arkley Road, Herne Bay, Kent, CT6 5SL

£225,000

- Three Bedroom Semi-Detached House
- Close To Seafront
- Walking Distance To Local Amenities
- No Onward Chain

55 Arkley Road, Herne Bay CT6 5SL

Located on Arkley Road in the charming coastal town of Herne Bay, this three-bedroom semi-detached house presents a wonderful opportunity for those looking to create their dream home. With two reception rooms and a conservatory, the property offers a comfortable space for relaxation and entertaining.

The house requires updating, allowing you to personalise the interiors to your taste and style. This is an ideal project for those with a vision, as the potential to enhance and modernise is abundant.

Conveniently located within walking distance to the town centre, you will find a variety of shops, cafes, and amenities just a short stroll away. Additionally, the nearby Memorial Park provides a lovely green space for leisurely walks and outdoor activities, perfect for families or anyone who enjoys the outdoors.

This property is not just a house; it is a canvas awaiting your creative touch. With its prime location and ample space, it is an excellent opportunity for first-time buyers, families, or investors looking to make their mark in Herne Bay. Don't miss the chance to transform this house into a beautiful home.



Council Tax Band: C



GROUND FLOOR

Entrance Hall

Sitting Room

11'7 x 10'1

Dining Room

11'8 x 10'1

Kitchen

8'5 x 5'6

Conservatory

7'8 x 7'7

Bathroom

FIRST FLOOR

Landing

Bedroom One

11'7 x 10'2

Bedroom Two

11'7 x 10'2

Bedroom Three

5'10 x 6'2

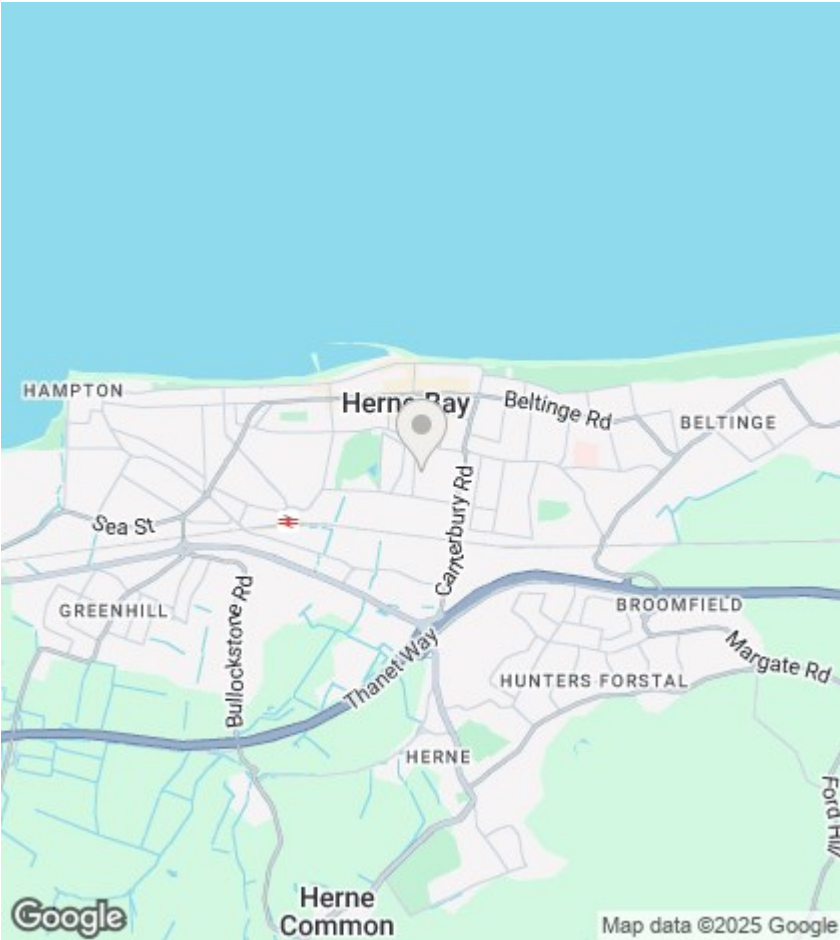
Shower Room

OUTSIDE

Rear Garden

COUNCIL TAX BAND C

NB: At the time of advertising these draft particulars are awaiting approval from our sellers.



Viewings

Viewings by arrangement only. Call 01227 389 998 to make an appointment.

EPC Rating:

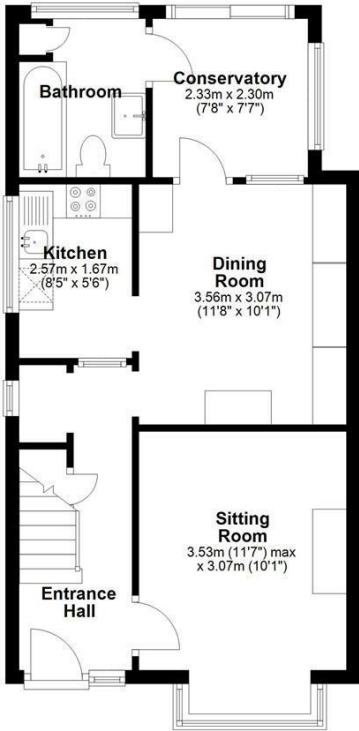
D

Energy Efficiency Rating		
	Current	Potential
Very energy efficient - lower running costs		
(92 plus) A		
(81-91) B		
(69-80) C		76
(55-68) D	60	
(39-54) E		
(21-38) F		
(1-20) G		
Not energy efficient - higher running costs		
England & Wales		EU Directive 2002/91/EC



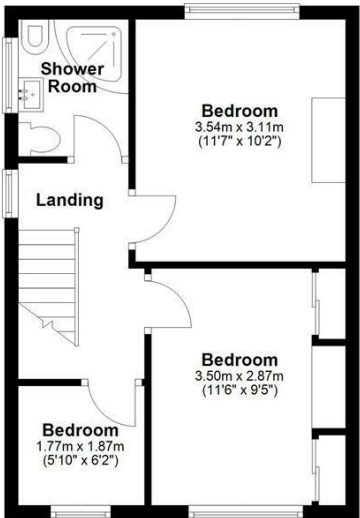
Ground Floor

Approx. 45.8 sq. metres (492.9 sq. feet)



First Floor

Approx. 34.7 sq. metres (373.0 sq. feet)



Total area: approx. 80.4 sq. metres (865.9 sq. feet)